

# Windows 10 VPN Instructions

(Meharry Medical College)

Type VPN in the search bar and once inside "network & internet" settings click on "network and sharing center"

**NETWORK & INTERNET**

Wi-Fi

Airplane mode

Data usage

VPN

Dial-up

Proxy

- Meharry\_Guest  
Open
- Meharry\_Wireless  
Secured
- xfinitywifi  
Open
- Bulldog Employee WiFi  
Secured
- Bulldog Student WiFi  
Secured
- Bulldog Guest WiFi  
Open
- CableWiFi  
Open
- Hidden Network  
Secured

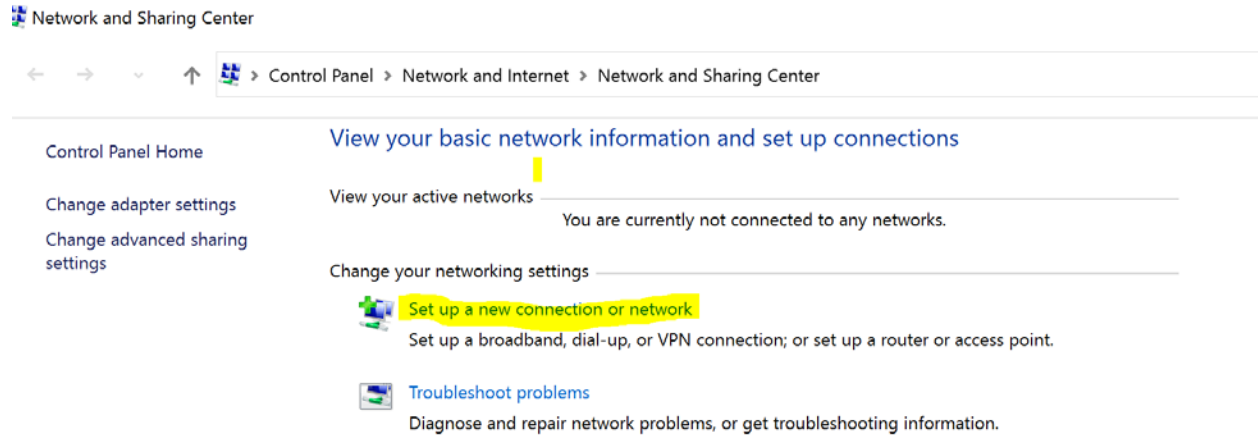
[Advanced options](#)

[Manage Wi-Fi settings](#)

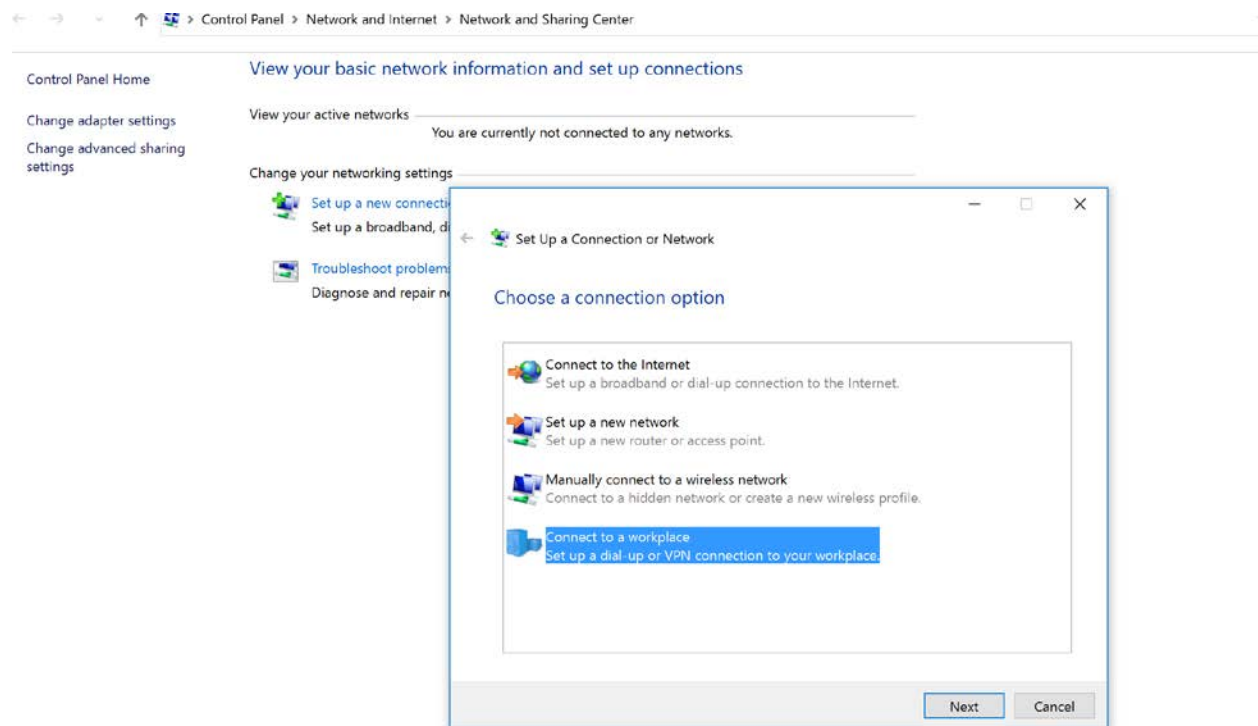
Related settings

- [Change adapter options](#)
- [Change advanced sharing options](#)
- [Network and Sharing Center](#)**
- [HomeGroup](#)
- [Windows Firewall](#)

Under "change your network settings" click on "set up a new connection or network"



Then choose "connect to a workplace" and click on "use my internet connection (vpn)"



In the Internet address, type: (192.136.67.2) and for destination name, type: (Meharry VPN). Uncheck "remember my credentials" then click on "Create." Then Click on "change adapter settings" (top left hand corner)

Control Panel Home

Change adapter settings

Change advanced sharing settings

## View your basic network information and set up connections

View your active networks

**DAVID's iPhone**  
Private network

Access type: Internet  
HomeGroup: Ready to create  
Connections: Wi-Fi (DAVID's iPhone)

Change your networking settings

- Set up a new connection
- Set up a broadband, dial-up, or VPN connection
- Troubleshoot problems
- Diagnose and repair network problems

Connect to a Workplace

Type the Internet address to connect to

Your network administrator can give you this address.

Internet address:

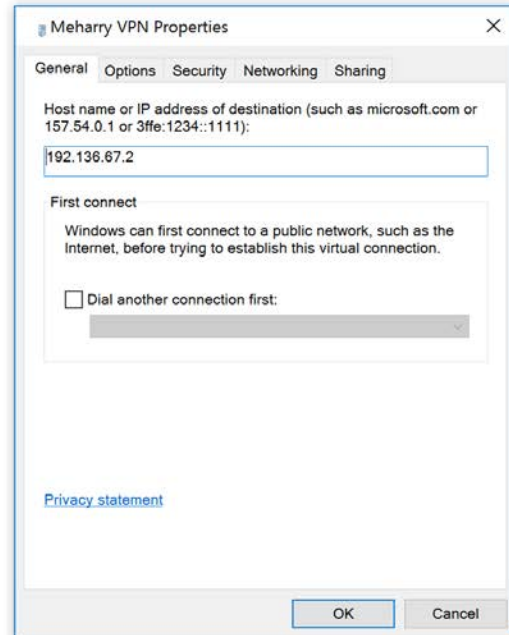
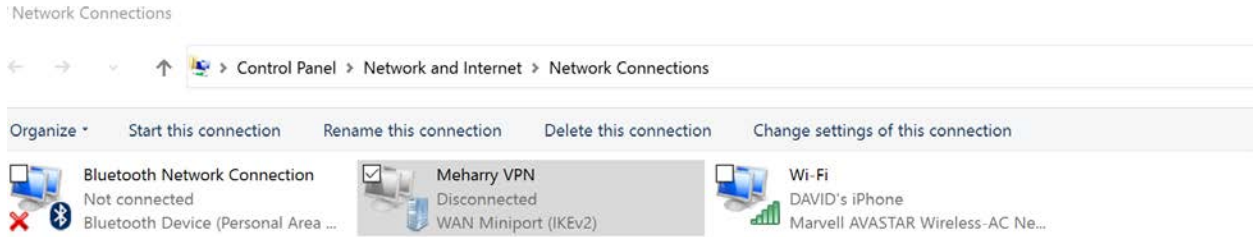
Destination name:

Use a smart card

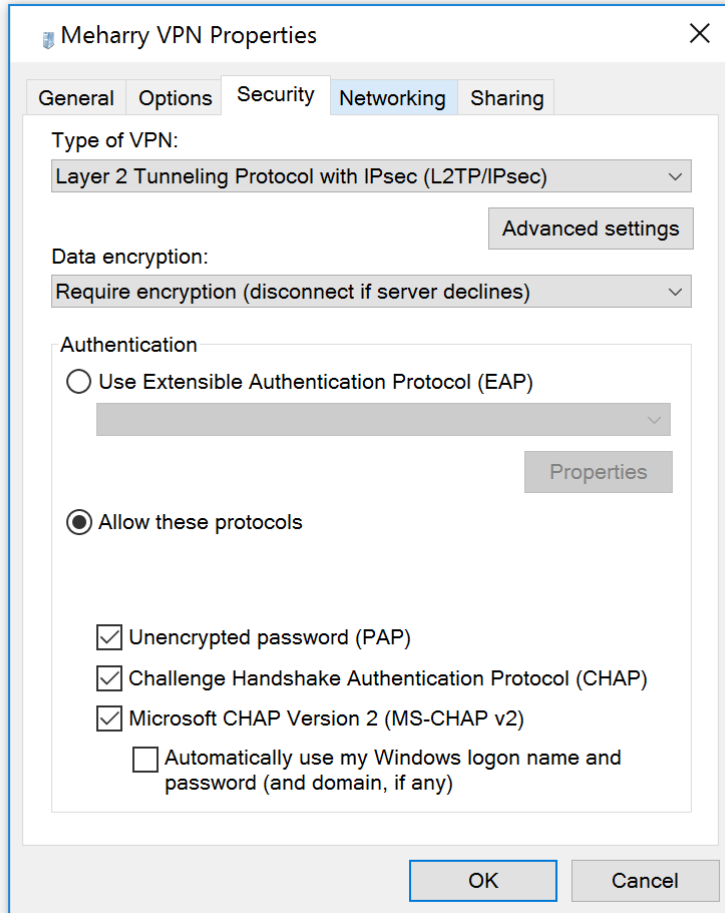
Remember my credentials

Allow other people to use this connection  
This option allows anyone with access to this computer to use this connection.

Right click "Meharry VPN" and select Properties



Under "Meharry VPN Properties" click on the "security" tab. For the type of VPN choose "Layer 2 Tunneling Protocol with IPsec (L2TP/IPsec)." For Data encryption choose "Require encryption (disconnect if server declines)." Select "Allow these Protocols" and make sure all 3 boxes are checked that are underneath. *Do Not check* "automatically use my windows logon name and password."

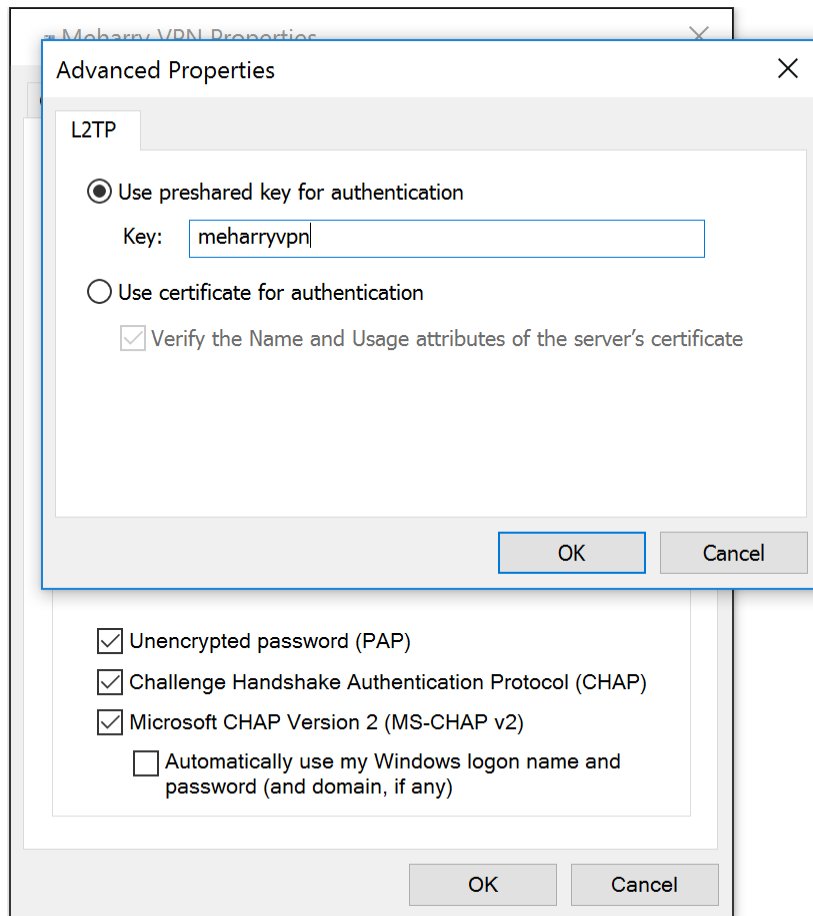


The image shows a Windows dialog box titled "Meharry VPN Properties" with a close button (X) in the top right corner. The dialog has five tabs: "General", "Options", "Security", "Networking", and "Sharing". The "Security" tab is currently selected and highlighted in blue. Inside the "Security" tab, there are three main sections:

- Type of VPN:** A dropdown menu showing "Layer 2 Tunneling Protocol with IPsec (L2TP/IPsec)". To the right of this dropdown is a button labeled "Advanced settings".
- Data encryption:** A dropdown menu showing "Require encryption (disconnect if server declines)".
- Authentication:** A section containing two radio buttons and three checkboxes:
  - The first radio button is "Use Extensible Authentication Protocol (EAP)", which is unselected. Below it is a dropdown menu and a button labeled "Properties".
  - The second radio button is "Allow these protocols", which is selected with a filled circle.
  - Below the selected radio button are three checkboxes, all of which are checked:
    - Unencrypted password (PAP)
    - Challenge Handshake Authentication Protocol (CHAP)
    - Microsoft CHAP Version 2 (MS-CHAP v2)
  - At the bottom of the authentication section is an unchecked checkbox:  Automatically use my Windows logon name and password (and domain, if any).

At the bottom of the dialog box, there are two buttons: "OK" and "Cancel".

Then click on "Advanced settings" and under Advanced properties choose "Use preshared key for authentication" and for the Key, type "meharryvpn"  
Click OK under "advanced properties" and click OK under Meharry VPN Properties



Now go back to the search bar and type "VPN" and once inside "Network & Internet" click VPN and choose "Connect" under the Meharry VPN.

The screenshot displays the Windows Settings application, specifically the "NETWORK & INTERNET" section. On the left, a navigation pane lists various network-related settings: "Wi-Fi", "Airplane mode", "Data usage", "VPN" (which is currently selected and highlighted in blue), "Dial-up", and "Proxy". The main content area is titled "VPN" and features a "+ Add a VPN connection" button. Below this, a card for "Meharry VPN" is shown, including a blue icon with a white infinity symbol and three buttons: "Connect", "Advanced options", and "Remove".

Below the VPN card, the "VPN Advanced Settings" section contains two toggle switches, both of which are turned "On":

- Allow VPN connections over Metered networks:  On
- Allow VPN to connect while Roaming:  On

The "Related settings" section at the bottom lists several links:

- [Change adapter options](#)
- [Change advanced sharing options](#)
- [Network and Sharing Center](#)
- [Windows Firewall](#)

When Signing into "Meharry VPN" your username will be: Meharry\username and your password is the same as when you log on to your meharry computer. You are now connected to "Meharry VPN"

NETWORK & INTERNET


- Wi-Fi
- Airplane mode
- Data usage
- VPN**
- Dial-up
- Proxy

### VPN

+ Add a VPN connection

Meharry VPN  
No Internet  
Connecting to Meharry VPN

#### Sign in



Domain:

[Change advanced sharing options](#)

[Network and Sharing Center](#)

[Windows Firewall](#)